

Container Specification



- ▶ **Introduction**
- ▶ **Container**
- ▶ **Specials**

Container

Introduction General Information

General Purpose Container



20' ►
40' ►

High Cube
General Purpose Container



40' ►

Hardtop Container



20' ►
40' ►

High Cube
Hardtop Container



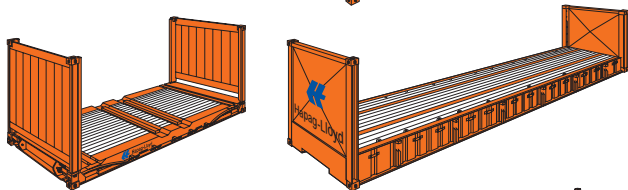
40' ►

Open Top Container



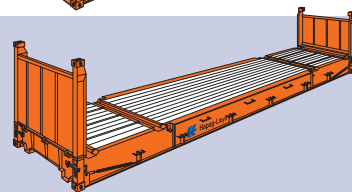
20' ►
40' ►

Flat



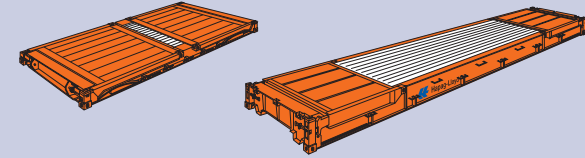
20' ►
40' ►

High Cube Flat



40' ►

Platform



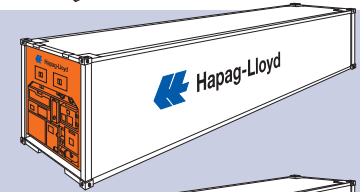
20' ►
40' ►

Ventilated Container



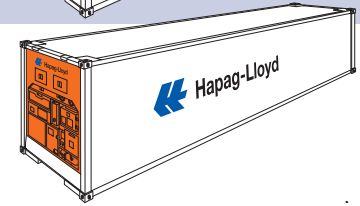
20' ►

Refrigerated Container



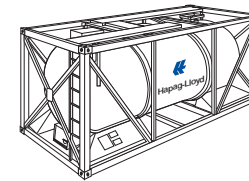
20' ►
40' ►

High Cube
Refrigerated Container



40' ►

Tank Container



20' ►

[Electric Plugs on Refrigerated Containers ►](#)

[Essential Conversion Factors ►](#)

[Container Size Type Codes ►](#)



Introduction

Hapag-Lloyd offer to their customers 20 different types of containers. With this wide range of standard and special containers we can provide you with the most suitable container for every product.

This booklet informs you about the technical data of the Hapag-Lloyd containers, such as

- dimensions
- weights
- particulars of construction

All values listed in the tables are given in metric. Ft and lbs values are for easy reference only.

All details listed are nominal figures. Apart from the tolerances given on internal dimensions on page 5 the tare weight can vary $\pm 2\%$.

In addition to the containers listed in this booklet we use, if necessary, leased equipment and/or exchange containers with other carriers.

This booklet only lists technical data. If you are looking for further advice or your special requirements are not yet satisfied, we are more than happy to assist you. Please call your nearest Hapag-Lloyd office or agent and let our experience work for you.

Please visit us as well on our Internet homepage, which will be frequently updated.

www.hlcl.com



General Information

Internal Dimensions

The internal dimensions and door openings of all Hapag-Lloyd containers exceed the below given ISO dimensions. However, the dimensions mentioned on the following pages are nominal figures. Because of production tolerances a difference in measurement is possible:

Tolerances	Length	Width	Height
Maximum Difference	10 mm 3/8"	10 mm 3/8"	10 mm 3/8"

Maximum Gross Weights

20' containers:

30 480 kg (67 200 lbs) valid for most Hapag-Lloyd 20' containers; exceeds ISO minimum standards (ISO 668).

40' containers:

Up to 34 000 kg (74 959 lbs).

Weight Limits for road and rail transport

For individually valid limits contact your local Hapag-Lloyd office.

Floor Loads

A container floor is capable of carrying a fork-lift truck with a maximum axle load of 5 460 kg (12 040 lbs), if the contact area per wheel is at least 142 cm² (22 sq.in) (ISO 1496/l).

Concentrated Loads

Concentrated loads are loads, that are not distributed over the full length of floor, when stowing heavy cargo in containers other than flats or platforms due care has to be taken that concentrated loads will not exceed the strength of the bottom construction of the container.

The maximum spreaded load should not exceed

- for 20' containers 4 ts per running meter in length (3' 3.5")
- for 40' containers 3 ts per running meter in length
- load must not exceed over max. payload

Gooseneck Tunnel on 40' Containers

All Hapag-Lloyd 40' containers are fitted with a Gooseneck tunnel to enable the transport on Gooseneck chassis.

Timber Treatment

Exposed timber is treated according to Australian requirements.

Container Markings

For easy identification Hapag-Lloyd containers are marked with HLCU- or HLXU- prefix either. Containers built in 1997 or thereafter do also show the ISO Size Type Code. For further information please see page 46.

External and Minimum Internal Dimensions (according ISO)

The following table gives the overall dimensions as standardized in ISO 668 and the minimum internal dimensions and door openings for General Purpose Containers as standardized in ISO 1496-1.

	Length		Width	Height		
	20'	40'		8'	8'	8'6"
Dimensions	6 058 mm	12 192 mm	2 438 mm	2 438 mm	2 591 mm	2 896 mm
Minimum Internal Dimensions	5 867 mm 19'3"	11 998 mm 39'43/8"	2 330 mm 7'73/4"	2 197 mm 7'21/2"	2 350 mm 7'81/2"	2 655 mm 8'81/2"
Minimum Door Opening Dimensions	-	-	2 286 mm 7'6"	2 134 mm 7'	2 261 mm 7'5"	2 566 mm 8'5"



General Purpose Container

20'

ISO Size Type Code: 22 G0
(22 G1)



- Suitable for any general cargo.
- Containers may be equipped with liner bags suitable for bulk cargo, e.g. malt.
- Fork-lift pockets for loaded containers.
- Various lashing devices on the top and bottom longitudinal rails and the corner posts. Lashing devices have a load of 1000 kg (2 205 lbs) each.



General Purpose Container

20'

Construction	Inside Dimensions			Door Opening		Weights			Capacity m ³ cu.ft
	Length	Width	Height	Width	Height	Max. Gross	Tare	Max. Payload	
	mm ft	mm ft	mm ft	mm ft	mm ft	kg lbs	kg lbs	kg lbs	

8'6" high

Steel container with corrugated walls and wooden floor	5895 19'4 1/8"	2350 7'8 1/2"	2392 7'10 1/8"	2340 7'8 1/8"	2292 7'6 1/4"	30 480 67 200	2 250 4 960	28 230 62 240	33,2 1172
	5895 19'4 1/8"	2350 7'8 1/2"	2385 7'9 7/8"	2338 7'8"	2292 7'6 1/4"	24 000 52 910	2 250 4 960	21 750 47 950	33,2 1172

Hapag-Lloyd Serial Number	Foot-note
---------------------------	-----------

HLCU 200 000 – 226 599	1)
HLCU 240 000 – 243 899	
HLCU 246 750 – 246 779	1) 2) 3)
HLXU 200 000 – 212 799	
HLXU 212 800 – 218 599	
HLXU 218 600 – 219 099	1) 2) 3)
HLXU 219 100 – 239 799	
HLXU 300 000 – 319 499	1) 2) 3)
HLCU 227 000 – 229 499	

Construction	Inside Dimensions			Door Max. Width mm ft	Weights			Capacity m ³ cu.ft
	Length	Width	Height		Max. Gross	Tare	Max. Payload	
			Middle mm ft					

8'6" high

Steel container with corrugated walls, wooden floor and removable steel roof	5886 19'3 3/4"	2342 7'8 1/8"	2388 7'10"	2313 7'7"	2336 7'8"	30 480 67 200	2 700 5 950	27 780 61 250	32,8 1160
	5886 19'3 3/4"	2342 7'8 1/8"	2388 7'10"	2313 7'7"	2336 7'8"	30 480 67 200	2 700 5 950	27 780 61 250	32,8 1160
	5886 19'3 3/4"	2342 7'8 1/8"	2375 7'9 1/2"	2330 7'7 3/4"	2336 7'8"	30 480 67 200	2 590 5 710	27 890 61 490	32,8 1160

Hapag-Lloyd Serial Number	Foot-note
---------------------------	-----------

HLCU 260 200 – 261 399	4)
HLXU 365 000 – 365 649	
HLCU 261 400 – 261 799	4)
HLCU 261 800 – 261 999	4)
HLCU 262 600 – 262 999	

Remarks:

- 1) 10 lashing rings on each top longitudinal rail; particularly suitable for the transport of hanging garments racks.
- 2) Provided with passive vents. ISO size type code: 22G1
- 3) Provided with extra lashing rings/bars for the transport of liner bags in the corner posts adjacent to the corner castings.
- 4) For special information please see 20' Hard Top Container page 12.



General Purpose Container

40'

ISO Size Type Code: 42 G0
(42 G1)



- Suitable for any general cargo.
- Various lashing devices on the top and bottom longitudinal rails and the corner posts. Lashing devices have a permissible load of 1 000 kg (2 205 lbs) each.

General Purpose Container

40'

Construction	Inside Dimensions			Door Opening		Weights			Capacity m ³ cu.ft
	Length	Width	Height	Width	Height	Max. Gross	Tare	Max. Payload	
	mm ft	mm ft	mm ft	mm ft	mm ft	kg lbs	kg lbs	kg lbs	

8'6" high

Steel container with corrugated walls and wooden floor	12 029 39'5 1/2"	2350 7'8 1/2"	2392 7'10 1/8"	2340 7'8 1/8"	2292 7'6 1/4"	30 480 67 200	3 780 8 330	26 700 58 870	67,7 2390
--	---------------------	------------------	-------------------	------------------	------------------	------------------	----------------	------------------	--------------

Hapag-Lloyd Serial Number	Foot-note
---------------------------	-----------

HLCU 400 000 - 428 599	1)
HLXU 400 000 - 449 999	1) 2)
HLXU 500 000 - 517 799	1) 2)

Construction	Inside Dimensions				Door	Weights			Capacity m ³ cu.ft
	Length	Width	Height			Max. Width	Max. Gross	Tare	
			Middle	Side	mm ft				

8'6" high

Steel container with corrugated walls, wooden floor and removable steel roof	12 020 39'5 1/4"	2342 7'8 1/8"	2388 7'10"	2313 7'7"	2336 7'8"	30 480 67 200	4 700 10 360	25 780 56 840	67,2 2374
	12 020 39'5 1/4"	2342 7'8 1/8"	2388 7'10"	2313 7'7"	2336 7'8"	30 480 67 200	4 700 10 360	25 780 56 840	67,2 2374
	12 020 39'5 1/4"	2345 7'8 1/4"	2380 7'9 5/8"	2300 7'6 1/2"	2334 7'7 7/8"	30 480 67 200	4 700 10 360	25 780 56 840	65,3 2306

Hapag-Lloyd Serial Number	Foot-note
---------------------------	-----------

HLCU 462 100 - 462 399	3)
HLCU 462 400 - 463 999	3)
HLXU 465 000 - 465 649	3)
HLXU 467 950 - 467 999	3)

Remarks:

- 1) 21 lashing rings on each top longitudinal rail; particularly suitable for the transport of hanging garment equipment.
- 2) Provided with passive vents. ISO size type code: 42 G1
- 3) Special information, please see 40' Hard Top Container page 15.



High Cube General Purpose Container

40'

ISO Size Type Code: 45 G0
(45 G1)



- Especially for light, voluminous cargo and overheight cargo up to max. 2.70 m (8'10¹/₄" (see table).
- Numerous lashing devices on the top and bottom longitudinal rails and the corner posts.
- Lashing devices have a permissible load of 1000 kg (2 205 lbs) each.
- **Consider overheight for inland transportation**



High Cube General Purpose Container

40'

Construction	Inside Dimensions			Door Opening		Weights			Capacity m ³ cu.ft
	Length	Width	Height	Width	Height	Max. Gross	Tare	Max. Payload	
	mm ft	mm ft	mm ft	mm ft	mm ft	kg lbs	kg lbs	kg lbs	

9'6" high

Steel container with corrugated walls and wooden floor	12 024 39'5 ³ / ₈ "	2350 7'8 ¹ / ₂ "	2697 8'10 ¹ / ₈ "	2340 7'8 ¹ / ₈ "	2597 8'6 ¹ / ₄ "	30 480 67 200	4 020 8 860	26 460 58 340	76,3 2694

Hapag-Lloyd Serial Number	Foot-note
---------------------------	-----------

HLCU 455 400 – 459 799	1) 2)
HLXU 450 000 – 459 899	1) 2)
HLXU 600 000 – 637 899	1) 2)

Construction	Inside Dimensions				Door Max. Width mm ft	Weights			Capacity m ³ cu.ft
	Length mm ft	Width mm ft	Height			Max. Gross kg lbs	Tare kg lbs	Max. Payload kg lbs	
			Middle mm ft	Side mm ft					

9'6" high

Steel container with corrugated walls, wooden floor and removable steel roof	12 020 39'5 ¹ / ₄ "	2342 7'8 ¹ / ₈ "	2693 8'10"	2618 8'7"	2336 7'8"	30 480 67 200	4 900 10 803	25 580 56 394	75,8 2677
	12 020 39'5 ¹ / ₄ "	2342 7'8 ¹ / ₈ "	2693 8'10"	2618 8'7"	2336 7'8"	32 500 71 650	5 200 11 463	27 300 60 186	76,0 2684

Hapag-Lloyd Serial Number	Foot-note
---------------------------	-----------

HLXU 467 000 – 467 299	3)
HLXU 665 000 – 666 049	3)

Remarks:

- 1) 21 lashing rings on each top longitudinal rail; particularly suitable for the transport of hanging garment equipment.
- 2) Provided with passive vents. ISO size type code: 45 G1
- 3) Special information, please see 40' High Cube Hard Top Container page 18.



Hardtop Container

20'

ISO Size Type Code: 22 U6

- This container type has been designed and developed by Hapag-Lloyd.
- It has especially been constructed for
 - heavy loads
 - high, and excessively high loads
 - loading, e.g. by crane, through roof opening and door side.
- The steel roof of some series (please see footnote) is fitted with fork-lift rings so that it can be removed by using a forklift. The weight of the steel roof is approx. 450 kg (990 lbs).
- With the roof removed and the doorheader swung out, it is much easier to load cargo using a crane via the door side.
- In case your cargo has overheight the roof sections can be lashed to a side-wall inside the container using only some 13 cm (5 1/8") of space.
- If required, we can provide disposable tarpaulins for the transport which can be fastened to the walls on the outside using lashing devices.
- The hardtop container provides many lashing devices to fasten your goods. The lashing devices on the corner posts and on the longitudinal rails of the roof

and floor are capable of bearing loads of up to 2,000 kg (4,410 lbs) each, and those in the middle of the side walls up to 500 kg (1,100 lbs) each. Lashing to the side walls can only be done after the roof has been closed.

- Fork-lift pockets for loaded containers.
- Utilizable for bulk cargo
By request, we can provide filler from top. Please contact our special cargo department.



- This container type has been designed for heavy loads. Whilst considering the technical data (including the permissible spreaded load limitations) please bear in mind the prevalent weight restrictions for land transport.
- For further information please see page 14 and our brochure "The 20', 40' Hardtop".



Hardtop Container

20'

Construction	Inside Dimensions				Weights			Capacity m ³ cu.ft	Hapag-Lloyd Serial Number	Foot- note
	Length	Width	Height		Max. Gross kg lbs	Tare kg lbs	Max. Payload kg lbs			
			Middle mm ft	Side mm ft						
8'6" high										
Steel container with corrugated walls, wooden floor and removable steel roof	5886 19'3 ³ / ₄ "	2342 7'8 ¹ / ₈ "	2388 7'10"	2313 7'7"	30 480 67 200	2 700 5 950	27 780 61 250	32,8 1160	HLCU 260 200 – 261 399	1)
	5886 19'3 ³ / ₄ "	2342 7'8 ¹ / ₈ "	2388 7'10"	2313 7'7"	30 480 67 200	2 700 5 950	27 780 61 250	32,8 1160	HLXU 365 000 – 365 649	1)2)3)4)
	5886 19'3 ³ / ₄ "	2342 7'8 ¹ / ₈ "	2375 7'9 ¹ / ₂ "	2330 7'7 ³ / ₄ "	30 480 67 200	2 590 5 710	27 890 61 490	32,8 1160	HLCU 261 400 – 261 799	1)
									HLCU 261 800 – 261 999	
									HLCU 262 600 – 262 999	

Remarks:

- 1) Roof with hinged rings for easy removal by a fork-lift truck.
- 2) Provided with passive vents. ISO size type code: 22 U6
- 3) 10 lashing rings on each top longitudinal rail; particularly suitable for the transport of hanging garment equipment.
- 4) Provided with extra lashing rings/bars for the transport of liner bags in the corner post adjacent to the corner castings.

Roof and door openings please see next page.



Roof and Door Openings of Hardtop Containers

20'

Roof Openings

Length	Width
B Between gusset plates mm ft	C Max. mm ft

8'6" high

5590 18'4"	2208 7'2 ⁷ / ₈ "
5590 18'4"	2208 7'2 ⁷ / ₈ "
5590 18'4"	2208 7'2 ⁷ / ₈ "

Door Openings

Width			Height	
F	G	H	I	K
Max.	At door header	Between top rails	Up to door header	Up to top rail
mm ft	mm ft	mm ft	mm ft	mm ft

2336 7'8"	1896 6'2 ⁵ / ₈ "	2208 7'2 ⁷ / ₈ "	2276 7'5 ⁵ / ₈ "	2220 7'3 ³ / ₈ "
2336 7'8"	1896 6'2 ⁵ / ₈ "	2208 7'2 ⁷ / ₈ "	2292 7'6 ¹ / ₄ "	2220 7'3 ³ / ₈ "
2336 7'8"	1896 6'2 ⁵ / ₈ "	2208 7'2 ⁷ / ₈ "	2280 7'5 ³ / ₄ "	2231 7'3 ³ / ₄ "

Roof lashed to sidewall

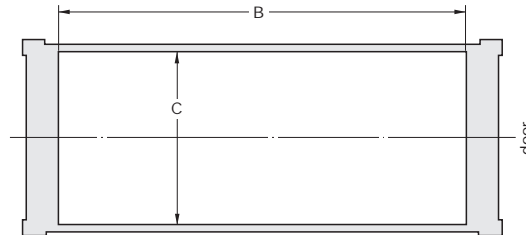
Reduced Inside Width		
Max.	Roof opening	Door opening
mm ft	mm ft	mm ft

2209 7'3"	2142 7'1 ¹ / ₄ "	2206 7'2 ⁷ / ₈ "
2209 7'3"	2142 7'1 ¹ / ₄ "	2206 7'2 ⁷ / ₈ "
2215 7'3 ¹ / ₈ "	2148 7'1 ¹ / ₂ "	2212 7'3"

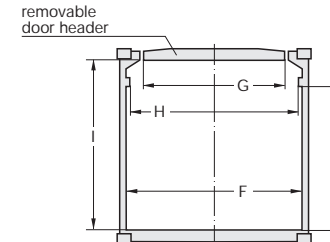
Hapag-Lloyd Serial Number

HLCU 260 200 – 261 399 HLXU 365 000 – 365 649
HLCU 261 400 – 261 799
HLCU 261 800 – 261 999 HLCU 262 600 – 262 999

Roof Openings



Door Openings



Hardtop Container

40'

ISO Size Type Code: 42 U6

- This container type has been designed and developed by Hapag-Lloyd.
- The 40' hardtop container has particularly been constructed for:
 - long loads which cannot be transported in the 20' hardtop container
 - heavy loads
 - high and excessively high loads
 - loading, e.g. by crane, through roof opening and door side.
- Provided with lifting devices by fork-lift truck or crane. The weight of the single steel roof comes within the limits of approx. 450 kg (990 lbs).
- With the roof removed and the doorheader swung out, it is much easier to load cargo using a crane via the door side.
- In case your cargo has overheight the roof sections can be lashed to a sidewall inside the container using only some 13 cm (5 1/8") of space.
- If required, we can provide disposable tarpaulins for the transport which can be fastened to the walls on the outside using lashing devices.



- The hardtop container provides many lashing devices to fasten your goods. The lashing devices on the corner posts and on the longitudinal rails of the roof and floor are capable of bearing loads of up to 2,000 kg (4,410 lbs) each, and those in the middle of the side walls up to 500 kg (1,100 lbs) each. Lashing to the side walls can only be done after the roof has been closed.
- The roof can easily be raised by about 70 mm (2 3/4"), using the roof locking devices so that the door-header can be swung out without removing the roof.
- This container type has been designed for heavy loads. Whilst considering the technical data (including the permissible spreaded load limitations) please bear in mind the prevalent weight restrictions for land transport.
- For further information please see page 17 and our brochure "The 20', 40' Hardtop".

Hardtop Container

40'

Construction	Inside Dimensions				Weights			Capacity m ³ cu.ft
	Length mm ft	Width mm ft	Height		Max. Gross kg lbs	Tare kg lbs	Max. Payload kg lbs	
			Middle mm ft	Side mm ft				

8'6" high

Steel container with corrugated walls, wooden floor and removable steel roof	12 020 39'5 1/4"	2342 7'8 1/8"	2388 7'10"	2313 7'7"	30 480 67 200	4 700 10 360	25 780 56 840	67,2 2374
	12 020 39'5 1/4"	2342 7'8 1/8"	2388 7'10"	2313 7'7"	30 480 67 200	4 700 10 360	25 780 56 840	67,2 2374
	12 020 39'5 1/4"	2345 7'8 1/4"	2380 7'9 5/8"	2300 7'6 1/2"	30 480 67 200	4 700 10 360	25 780 56 840	65,3 2306

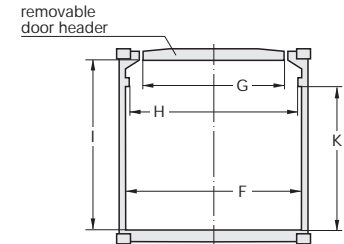
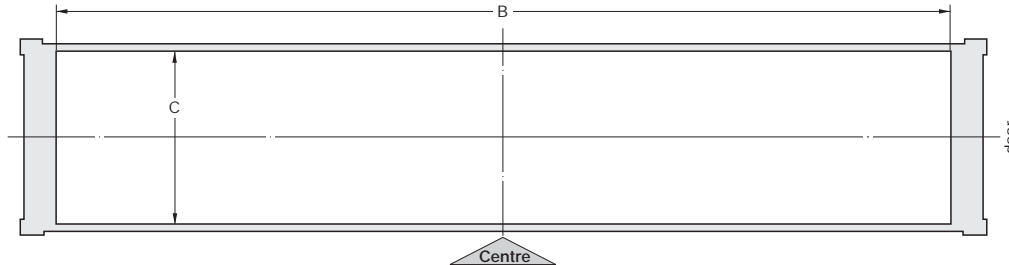
Hapag-Lloyd Serial Number	Foot-note
---------------------------	-----------

HLCU 462 100 – 462 399	1)
HLCU 462 400 – 463 999	1)
HLXU 465 000 – 465 649	1)
HLXU 467 950 – 467 999	2)

Remarks:

1) **Attention, internal height reduction for cargo due to at centre located roof adjust bar.**

2) Special design, roof locking clips.



"Attention" Reduced inside height due to adjust bar.

Roof and door openings please see next page.



Roof and Door Openings of Hardtop Containers

40'

Roof Openings

Length	Width
B Between gusset plates mm ft	C Max. mm ft

8'6" high

11724 38'5 1/2"	2208 7'2 7/8"
11724 38'5 1/2"	2208 7'2 7/8"
11724 38'5 1/2"	2208 7'2 7/8"

Door Openings

Width			Height	
F Max. mm ft	G At door header mm ft	H Between top rails mm ft	I Up to door header mm ft	K Up to top rail mm ft

2336 7'8"	1896 6'2 5/8"	2208 7'2 7/8"	2292 7'6 1/4"	2220 7'3 7/8"
2336 7'8"	1896 6'2 5/8"	2208 7'2 7/8"	2276 7'5 5/8"	2220 7'3 7/8"
2334 7'7 7/8"	1882 6'2 1/2"	2208 7'2 7/8"	2290 7'6 1/8"	2125 6'11 5/8"

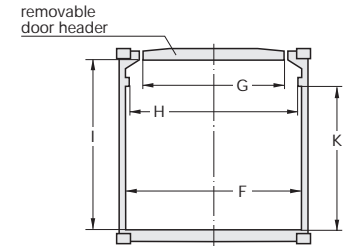
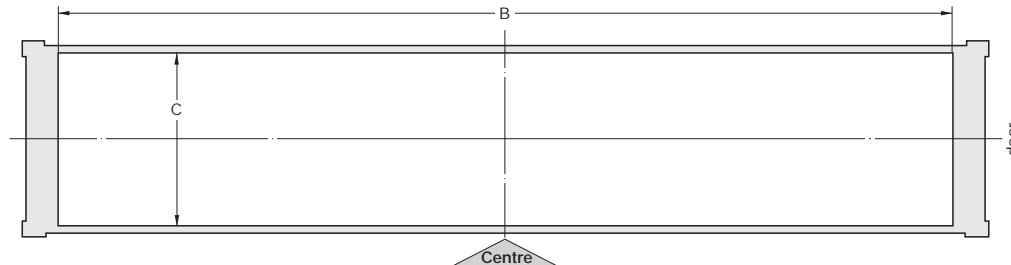
Roof lashed to sidewall

Reduced Inside Width		
Max. mm ft	Roof opening mm ft	Door opening mm ft

2209 7'3"	2142 7'1 1/4"	2206 7'2 7/8"
2209 7'3"	2142 7'1 1/4"	2206 7'2 7/8"
2205 7'2 3/4"	2102 6'10 3/4"	1996 6'6 1/2"

Hapag-Lloyd Serial Number

HLCU 462 100 – 462 399
HLCU 462 400 – 463 999 HLXU 465 000 – 465 649
HLXU 467 950 – 467 999



"Attention" Reduced inside height due to adjust bar.



High Cube Hardtop Container

40'

ISO Size Type Code: 45 U6

- This container type has been designed and developed by Hapag-Lloyd.
- The 40' hardtop container has particularly been constructed for
 - long loads which cannot be transported in the 20' hardtop container
 - heavy loads
 - high and excessively high loads
 - loading, e. g. by crane, through roof opening and door side.
- The roof can be removed by using a fork-lift. The weight of the steel roof is approx. 450 kg (990 lbs) each section.
- With the roof removed and the doorheader swung out, it is much easier to load cargo using a crane via the door side.
- In case your cargo has overheight the roof sections can be lashed to a sidewall inside the container using only some 13 cm (5 1/8") of space.
- If required, we can provide disposable tarpaulins for the transport which can be fastened to the walls on the outside using lashing devices.



- The hardtop container provides many lashing devices to fasten your goods. The lashing devices on the corner posts and on the longitudinal rails of the roof and floor are capable of bearing loads of up to 2,000 kg (4,410 lbs) each, and those in the middle of the side walls up to 500 kg (1,100 lbs) each. Lashing to the side walls can only be done after the roof has been closed.

- The roof can easily be raised by about 70 mm (2 3/4"), using the roof locking devices so that the door-header can be swung out without removing the roof.
- This container type has been designed for heavy loads. Whilst considering the technical data (including the permissible spreaded load limitations) please bear in mind the prevalent weight restrictions for land transport.
- For further information please see page 20 and our brochure "The 20', 40' Hardtop".



High Cube Hardtop Container

40'

Construction	Inside Dimensions				Weights			Capacity m ³ cu.ft
	Length mm ft	Width mm ft	Height		Max. Gross kg lbs	Tare kg lbs	Max. Payload kg lbs	
			Middle mm ft	Side mm ft				

9'6" high

Steel container with corrugated walls, wooden floor and removable steel roof	12 020 39'5 1/4"	2342 7'8 1/8"	2693 8'10"	2618 8'7"	30 480 67 200	4 900 10 803	25 580 56 394	75,8 2677
	12 020 39'5 1/4"	2342 7'8 1/8"	2693 8'10"	2618 8'7"	32 500	5 200	27 300	76,0

Hapag-Lloyd Serial Number	Foot-note
---------------------------	-----------

HLXU 467 000 – 467 299	*
HLXU 665 000 – 665 199	
HLXU 665 200 – 666 049	

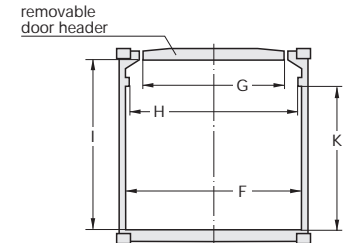
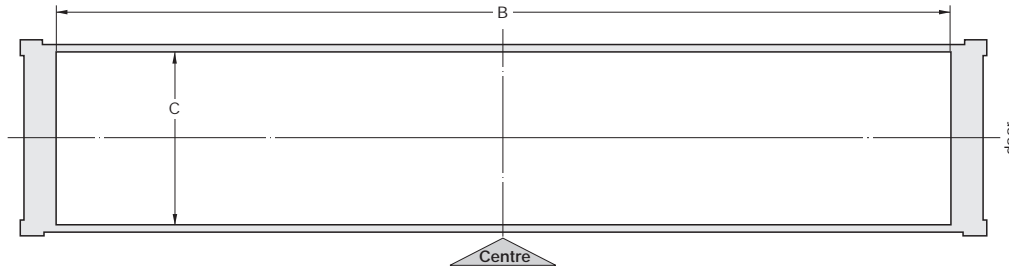
Remarks:

* Roof with hinged rings for easy removal by a fork-lift truck.

ISO size type code: 45 U6

18 lashing rings on each top longitudinal rail; particularly suitable for the transport of hanging garment equipment.

Attention, internal height reduction for cargo due to at centre located roof adjust bar.



“Attention” Reduced inside height due to adjust bar.

Roof and door openings please see next page.



Roof and Door Openings of Hardtop Containers

40'

Roof Openings

Length	Width
B Between gusset plates mm ft	C Max. mm ft

9'6" high

11724 38'5 1/2"	2208 7'2 7/8"
--------------------	------------------

Door Openings

Width			Height	
F	G	H	I	K
Max.	At door header	Between top rails	Up to door header	Up to top rail
mm ft	mm ft	mm ft	mm ft	mm ft

2336 7'8"	1896 6'2 5/8"	2208 7'2 7/8"	2597 8'6 1/4"	2525 8'3 3/8"
--------------	------------------	------------------	------------------	------------------

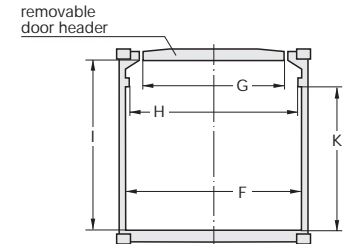
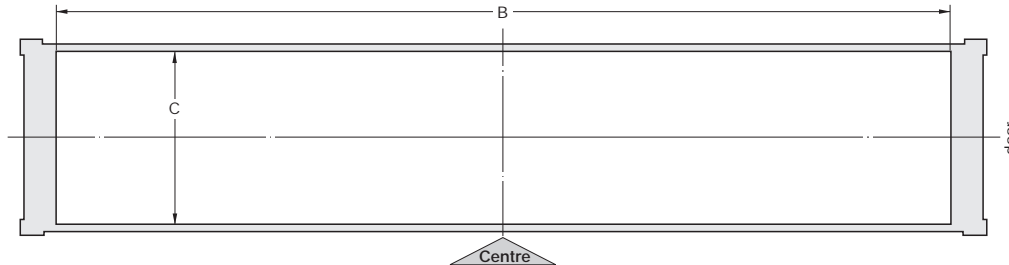
Roof lashed to sidewall

Reduced Inside Width		
Max.	Roof opening	Door opening
mm ft	mm ft	mm ft

2230 7'3 3/4"	2163 7'1 1/8"	2227 7'3 5/8"
------------------	------------------	------------------

Hapag-Lloyd Serial Number

HLXU 467 100 - 467 299



"Attention" Reduced inside height due to adjust bar.

Open Top Container

20'

ISO Size Type Code: 22 U1



- Especially for
 - overheight cargo
 - loading from top side, e.g. by crane
 - loading from door side, e.g. with cargo hanging from overhead tackle
- Door header can be swung out on all open top containers
- If required, we can provide disposable tarpaulins. For fastening tarpaulins, lashing bars are available on the outside of the walls. Using one way tarpaulins requires the corner castings to be accessible.
- Fork-lift pockets for loaded containers.
- Numerous lashing devices on the top and bottom longitudinal rails and the corner posts. Lashing devices have a permissible load of 1 000 kg (2 205 lbs) each.
- **Dimensions of roof and door openings please see page 22.**



Open Top Container

20'

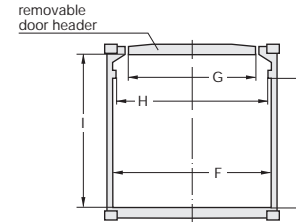
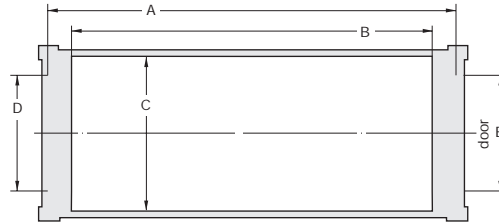
Construction	Inside Dimensions				Weights			Capacity m ³ cu.ft
	Length	Width	Height		Max. Gross kg lbs	Tare kg lbs	Max. Payload kg lbs	
			Middle mm ft	Side mm ft				

Hapag-Lloyd Serial Number	Foot- note
---------------------------------	---------------

8'6" high

Steel container with corrugated walls, wooden floor and removable tarpaulin	5888 19'3 ³ / ₄ "	2345 7'8 ¹ / ₈ "	2365 7'9"	2315 7'7 ¹ / ₈ "	30 480 67 200	2 250 4 960	28 230 62 240	32,0 1130
	5897 19'4 ¹ / ₈ "	2350 7'8 ¹ / ₂ "	2377 7'9 ¹ / ₂ "	2347 7'8 ³ / ₈ "	30 480 67 200	2 350 5 180	28 130 62 020	32,5 1146

HLCU 264 600 – 264 899 HLXU 260 000 – 260 849	
HLXU 260 850 – 261 599 HLXU 360 000 – 360 299	



Roof Openings

Length		Width		
A	B	C	D	E
Max.	Between gusset plates	Max.	Front Between gussets	Door Between gussets
mm ft	mm ft	mm ft	mm ft	mm ft

Door Openings

Width			Height	
F	G	H	I	K
Max.	At door header	Between top rails	Up to door header	Up to top rail
mm ft	mm ft	mm ft	mm ft	mm ft

Hapag-Lloyd Serial Number

8'6" high

5415 17'9 ¹ / ₈ "	5360 17'7"	2205 7'2 ³ / ₄ "	na na	1880 6'2"
5439 18'4"	5338	2230 7'3 ³ / ₄ "	na na	1902 6'2 ⁷ / ₈ "

2335 7'8"	1880 6'2"	2205 7'2 ³ / ₄ "	2280 7'5 ³ / ₄ "	2125 6'11 ⁵ / ₈ "
2338 7'8"	1902 6'2 ⁷ / ₈ "	2230 7'3 ³ / ₄ "	2280 7'5 ³ / ₄ "	2231 7'1"

HLCU 264 600 – 264 899 HLXU 260 000 – 260 849
HLXU 260 850 – 261 599



Open Top Container

40'

ISO Size Type Code: 42 U1



- Especially for
 - overheight cargo
 - loading from top side, e.g. by crane
 - loading from door side, e.g. with cargo hanging from overhead tackle
- Door header can be swung out on all open top containers
- If required, we can provide disposable tarpaulins. For fastening tarpaulins, lashing bars are available on the outside of the walls. Using one way tarpaulins requires the corner castings to be accessible.
- Numerous lashing devices on the top and bottom longitudinal rails and the corner posts. Lashing devices have a permissible load of 1000 kg (2 205 lbs) each.
- **Dimensions of roof and door openings please see page 25.**



Open Top Container

40'

Construction	Inside Dimensions				Weights			Capacity m ³ cu.ft	Hapag-Lloyd Serial Number	Foot- note
	Length	Width	Height		Max. Gross kg lbs	Tare kg lbs	Max. Payload kg lbs			
			Middle mm ft	Side mm ft						

8'6" high

Steel container with corrugated walls, wooden floor and removable tarpaulin	12 029 39'5 1/2"	2342 7'8 1/8"	2376 7'9 1/2"	2326 7'7 1/2"	30 480 67 200	3 810 8 400	26 670 58 800	65,5 2310	HLCU 461 200 - 461 499	
	12 022 39'5 1/4"	2345 7'8 1/8"	2365 7'9 1/8"	2315 7'7 1/8"	30 480 67 200	3 740 8 245	26 740 58 955	65,3 2306	HLCU 461 500 - 461 749 HLXU 460 000 - 460 799	
	12 030 39'5 5/8"	2350 7'8 1/2"	2377 7'9 1/2"	2347 7'8 3/8"	30 480 67 200	3 850 8 490	26 630 58 710	66,4 2345	HLXU 460 800 - 462 119	

Steel container with corrugated walls, wooden floor and removable tarpaulin	12 029 39'5 1/2"	2350 7'8 1/2"	2380 7'9 5/8"	2346 7'8 3/8"	32 500 67 200	4 050 8 400	28 450 58 800	68,8 2310	HLXU 560 000 - 560 299	
	12 029 39'5 1/2"	2350 7'8 1/2"	2380 7'9 5/8"	2346 7'8 3/8"	32 500 67 200	4 050 8 400	28 450 58 800	68,8 2310	HLXU 560 300 - 560 899	

Roof and door openings please see next page.



Roof and Door Openings of Open Top Containers

40'

Roof Openings

Length		Width		
A	B	C	D	E
Max.	Between gusset plates	Max.	Front Between gussets	Door Between gussets
mm	mm	mm	mm	mm
ft	ft	ft	ft	ft

8'6" high

11544 37'10 ¹ / ₂ "	11444 37'6 ¹ / ₂ "	2230 7'3 ³ / ₄ "	na na	1885 6'2 ¹ / ₈ "
11550 37'10 ³ / ₄ "	11515 37'9 ³ / ₈ "	2205 7'2 ³ / ₄ "	na na	1880 6'2"
11573 37'11 ⁵ / ₈ "	11472 37'7 ⁵ / ₈ "	2210 7'3"	na na	1902 6'2 ⁷ / ₈ "

Door Openings

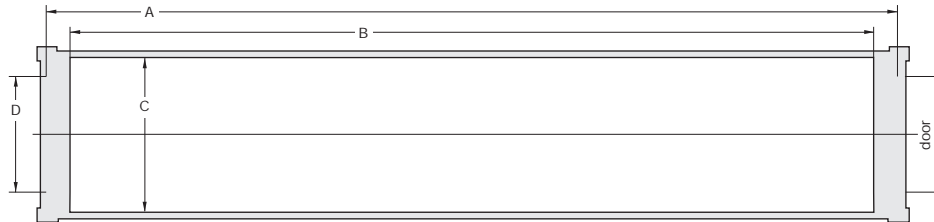
Width		Height		
F	G	H	I	K
Max.	At door header	Between top rails	Up to door header	Up to top rail
mm	mm	mm	mm	mm
ft	ft	ft	ft	ft

2336 7'8"	1885 6'2 ¹ / ₈ "	2230 7'3 ³ / ₄ "	2280 7'5 ³ / ₄ "	2146 7'1 ¹ / ₂ "
2335 7'8"	1880 6'2"	2205 7'2 ³ / ₄ "	2280 7'5 ³ / ₄ "	2125 6'11 ⁵ / ₈ "
2338 7'8"	1902 6'2 ⁷ / ₈ "	2210 7'3"	2292 7'6 ¹ / ₄ "	2131 6'11 ⁷ / ₈ "

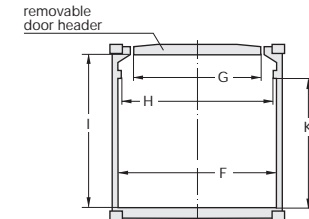
Hapag-Lloyd Serial Number

HLCU 461 200 – 461 499
HLCU 461 500 – 461 749 HLXU 460 000 – 460 799
HLXU 460 800 – 462 119

Roof Openings



Door Openings



Flat – All Types

20'

ISO Size Type Code: 22 P1 = 8'6"

high
(22 P3)
(22 P8)



- Especially for heavy loads and oversize cargo as well as project cargo.
- Fork-lift pockets for loaded containers.
- Numerous very strong lashing devices on the corner posts, longitudinal rails and on the floor or base ends. Lashing devices on the longitudinal rails have a permissible load of 2 000 kg up to 5 000 kg each.
- **Maximum payload can only be used if distributed over the total floor area of flatrack.**
If concentration of heavy load on a small part of floor area is required please contact your Hapag-Lloyd partner office for stowage advice.
- Flats are delivered without stanchions. If stanchions are required please inform us upon booking.
- Collapsible flatracks, provided with spring assisted endwalls.
- Collapsible flatracks, provided with twistlocks to interlock units into a 8'6" high pile.

Flat

20'

Construction	Inside Dimensions						Weights		
	Length of floor	Length between posts	Width of floor	Width between stanchions	Height	Height of bottom	Max. Gross	Tare	Max. Payload
	mm ft	mm ft	mm ft	mm ft	mm ft	mm ft	kg lbs	kg lbs	kg lbs

Hapag-Lloyd Serial Number	Foot-note
---------------------------	-----------

8'6" high

Steelframe with fixed endwalls, and softwood floor	5980 19'7 ³ / ₈ "	5698 18'8 ³ / ₈ "	2230 7'3 ³ / ₄ "	2245 7'4 ³ / ₈ "	2255 7'4 ³ / ₄ "	336 1'1 ¹ / ₄ "	24 000 52 910	2 500 5 510	21 500 47 400
	5962 19'6 ³ / ₄ "	5672 18'7 ¹ / ₄ "	2242 7'4 ¹ / ₄ "	2242 7'4 ¹ / ₄ "	2261 7'5"	330 1'1"	30 000 66 140	2 200 4 850	27 800 61 290
Steelframe with collapsible endwalls and softwood floor	5950 19'6 ¹ / ₄ "	5675 18'7 ³ / ₈ "	2428 7'11 ⁵ / ₈ "	2213 7'3 ¹ / ₈ "	2270 7'5 ³ / ₈ "	316 1'3 ⁸ / ₈ "	33 000 72 752	2 600 5 732	30 150 67 020
Flat/Platform with flushfolding endwalls and softwood floor	6038 19'9 ³ / ₄ "	5638 18'6"	2208 7'2 ⁷ / ₈ "	2438 8'	2235 7'4"	370	30 480 67 200	2 520 5 560	27 960 61 640
	6038 19'9 ³ / ₄ "	5612 18'4 ⁷ / ₈ "	2210 7'2 ⁷ / ₈ "	2438 8'	2213 7'3 ¹ / ₈ "	370	34 000 74 950	2 740 6 040	31 260 68 910

HLCU 266 100 – 266 199	
HLCU 266 200 – 266 561	
HLXU 268 000 – 268 149	
HLXU 268 500 – 268 599	
HLXU 268 600 – 269 199	1)

Flat/Platform with flushfolding endwalls and softwood floor	6068 19'10 7/8"	5638 18'5 31/32"	2208 7'2 ¹⁵ / ₁₆ "	2438 8'	2233 7'3 15/16"	370 1'2 9/16"	40 000 88 180	2 940 6 480	37 060 81 700

HLXU 368 000 - 368 099	1)

Remarks:

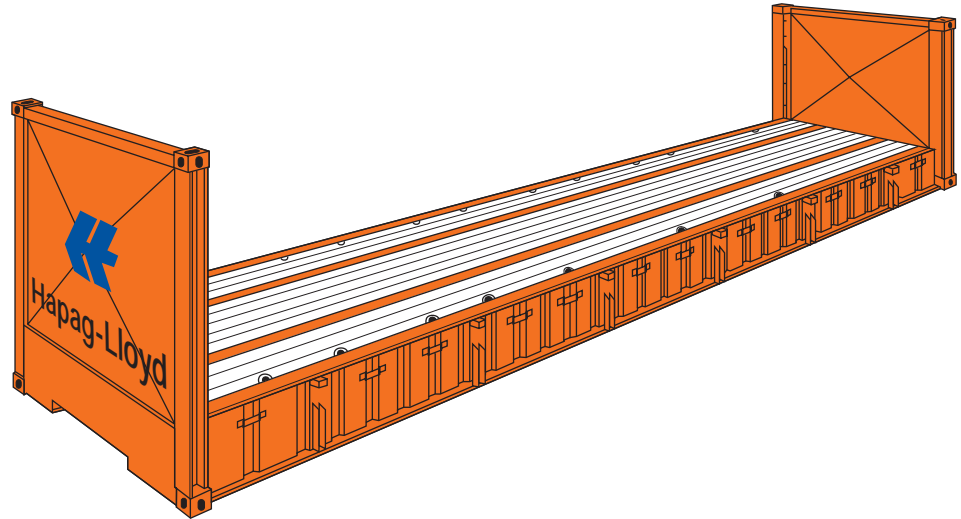
1) ISO size type code: 22 P8



Flat

40'

ISO Size Type Code: 42 P1



- Especially for heavy loads and overwidth cargo.
- Higher loadings possible if required.
- Strong bottom construction with fixed endwalls (which allow bracing and lashing of cargo as well as stacking).
- Gooseneck tunnel on both ends of all 40' flats.
- Numerous very strong lashing devices on the corner posts, longitudinal rails and on the floor. Lashing devices on the longitudinal rails and on the floor of 40' containers have a permissible load of 4 000 kg (8 820 lbs) each.
- **Maximum payload can only be used if distributed over the total floor area of the flatrack.**
If concentration of heavy load on a small part of floor area is required please contact your Hapag-Lloyd partner office for stowage advice.
- Flats are delivered without stanchions. If stanchions are required please inform us upon booking.



Flat-Fixed End

40'

Construction	Inside Dimensions						Weights		
	Length of floor	Length between posts	Width of floor	Width between stanchions	Height	Height of bottom	Max. Gross	Tare	Max. Payload
	mm ft	mm ft	mm ft	mm ft	mm ft	mm ft	kg lbs	kg lbs	kg lbs

8'6" high

Steelframe with fixed endwalls, and softwood floor	12010 39'47/8"	11832 38'97/8"	2228 7'33/4"	2228 7'33/4"	1981 6'6"	610 2'	45 000 99 210	4 200 9 265	40 800 89 945
	12086 39'77/8"	11826 38'95/8"	2224 7'31/2"	2224 7'31/2"	1981 6'6"	610 2'	45 000 99 210	4 200 9 265	40 800 89 945

Hapag-Lloyd Serial Number	Foot-note
---------------------------	-----------

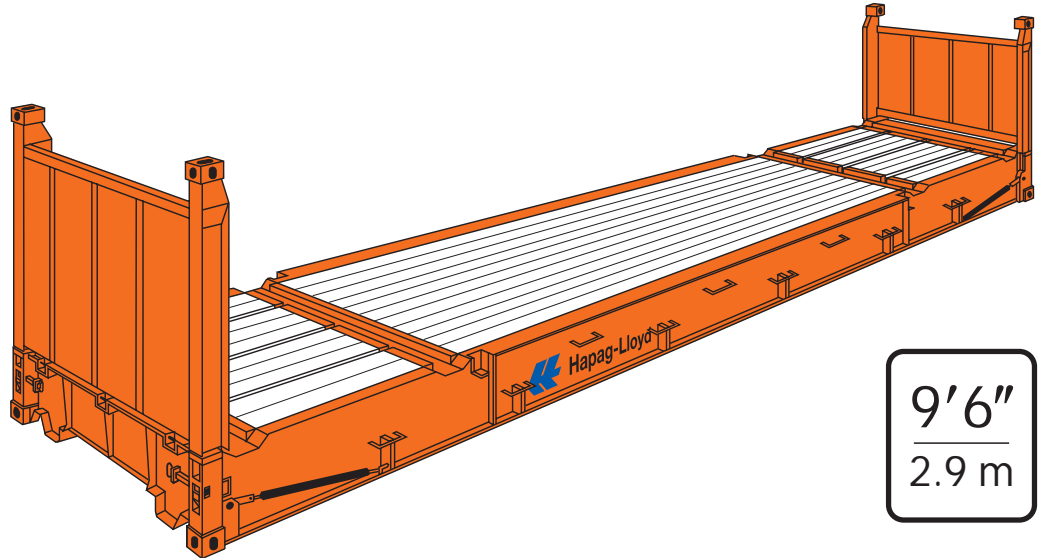
HLCU 466 300 – 466 549	
HLCU 466 550 – 466 899	

High Cube Flat

ISO Size Type Code: 45 P8

40'

- Extraordinary very strong frame design with folding endwalls (which allow bracing and lashing as well as stacking). **For tailor-made lashing advise, please contact our customer service.**
- Especially for heavy loads and oversize cargo as well as project cargo.
- Collapsible flatracks, provided with twistlocks to interlock units into a 8'6" high pile.
- Collapsible flatracks, provided with spring assisted endwalls.
- Used as "Tweendecks" in holds and on hatch covers for oversized cargoes.



- Numerous very strong lashing devices on longitudinal rails and base ends. These heavy duty lashing devices have a permissible load of 5 000 kg each.
- Gooseneck tunnel on both ends of all 40' flats.
- **Maximum payload can only be used if distributed over the total floor area of the flatrack. If concentration of heavy load on a small part of floor area is required please contact your Hapag-Lloyd partner office for stowage advice.**
- Flats are delivered without stanchions. If stanchions are required please inform us upon booking.



High Cube Flat

40'

Construction	Inside Dimensions						Weights		
	Length of floor	Length between Corner Posts	Width of floor	Width between Stanchions	Height	Height of Bottom	Max. Gross	Tare	Max. Payload
	mm ft	mm ft	mm ft	mm ft	mm ft	mm ft	kg lbs	kg lbs	kg lbs

Hapag-Lloyd Serial Number	Foot- note
---------------------------------	---------------

9'6" high

Steelframe with collapsible flush-folding endwalls – can be converted to a platform	12 060 39'6 ³ / ₄ "	11 660 38'3 ¹ / ₈ "	2370 7'9 ¹ / ₈ "	2200 7'2 ⁵ / ₈ "	2245 7'4 ³ / ₈ "	648 2'1 ¹ / ₂ "	45 000 99 210	5 700 12 570	39 300 86 640
	12 048 39'6 ¹ / ₄ "	11 652 38'3 "	2370 7'9 ¹ / ₈ "	2200 7'2 ⁵ / ₈ "	2258 7'4 ⁷ / ₈ "	648 2'1 ¹ / ₂ "	50 000 110 230	5 950 13 120	44 050 97 110

HLCU 468 400 – 468 599 HLXU 468 000 – 469 799	*
HLXU 668 000 – 668699 HLXU 668 700 – 669499	1)* *

Remarks:

* Timber treated according to Australien requirements.

Folds 4 into 2591 mm (8'6").

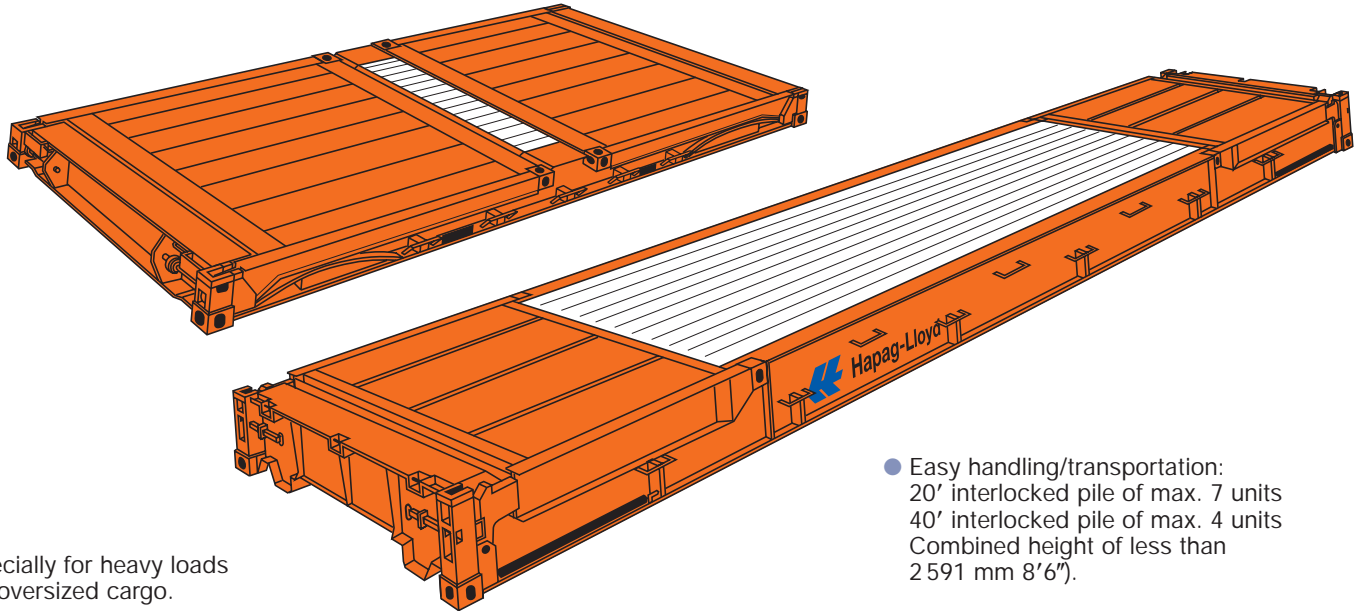
ISO size type code: 45 P8

1) 50 t decal should be applied

Flat-Collapsible and/or Convertible into a Platform

20' / 40'

ISO Size Type Code: according to Flat Series



- Especially for heavy loads and oversized cargo.
- Strong bottom construction.
- Gooseneck tunnel on both ends of all 40' platforms.
- Static load up to 80 000 kg as a 40' foundation base.
- Other features please see comparatively flat series.
- Timber treated according to Australian requirements.
- Numerous very strong lashing devices.
- Easy handling/transportation: 20' interlocked pile of max. 7 units 40' interlocked pile of max. 4 units Combined height of less than 2 591 mm 8'6").
- Transport of heavy loads concentrated on a small load transfer area is possible.
- **Special requirements for big and more heavy cargoes, please contact our special cargo department. Solution plans are already worked out or will be calculated.**



Platform

20' / 40'

Construction	Dimensions			Weights		
	Length	Width	Height of Bottom	Max. Gross	Tare	Max. Payload
mm ft	mm ft	mm ft	kg lbs	kg lbs	kg lbs	

1'11/4" high

Steelframe with collapsible flushfolding endwalls – can be converted into a platform	6058 20'	2438 8'	370 1'2 ⁹ / ₁₆ "	30 480 67 200	2 520 5 560	27 960 61 640
	6058 20'	2438 8'	370 1'2 ⁹ / ₁₆ "	34 000 74 950	2 740 6 040	31 260 68 910

2' high

Steelframe with collapsible flushfolding endwalls – can be converted into a platform	12 192 40'	2245 7'4 ³ / ₈ "	648 2'1 ¹ / ₂ "	45 000 99 210	5 700 12 570	39 300 86 640
--	---------------	---	--	------------------	-----------------	------------------

Hapag-Lloyd Serial Number	Foot-note
---------------------------	-----------

20'

HLXU 268 500 – 268 599	1)2)3)4)
HLXU 268 600 – 269 199	1)2)3)4)
HLXU 368 000 – 368 099	1)2)3)4)

40'

HLCU 468 400 – 468 599	2)5)6)7)
HLXU 468 000 – 469 799	2)5)6)7)

Remarks:

- 1) Fork-lift pockets.
- 2) Useable as a foundation base, static load up to 80.000 kg.
- 3) Folds 7 into 2591 mm (8'6").
- 4) ISO size type code: 22 P8.
- 5) Folds 4 into 2591 mm (8'6").
- 6) Equipped with 2 gooseneck tunnels.
- 7) ISO size type code: 45 P8.



Ventilated Container

20'

ISO Size Type Code: 22 V0



- Especially for cargo which needs ventilation.
- Fork-lift pockets for loaded containers.
- Natural ventilation is provided by openings in top and bottom longitudinal rails. The labyrinth construction of these ventilation openings ensures weather-proofness.
- Numerous lashing devices on the top and bottom longitudinal rails and the corner posts. Lashing devices have a permissible load of 1000 kg (2205 lbs) each.



Ventilated Container

20'

Construction	Inside Dimensions			Door Opening		Weights			Capacity m ³ cu.ft
	Length	Width	Height	Width	Height	Max. Gross	Tare	Max. Payload	
	mm ft	mm ft	mm ft	mm ft	mm ft	kg lbs	kg lbs	kg lbs	

Hapag-Lloyd Serial Number	Foot- note
---------------------------------	---------------

8'6" high

Steel container with corrugated walls and wooden floor	5888 19'3 ³ / ₄ "	2325 7'7 ¹ / ₂ "	2392 7'10 ¹ / ₈ "	2334 7'7 ⁷ / ₈ "	2290 7'6 ¹ / ₈ "	30 480 67 200	2 400 5 290	28 080 61 910	33 1167
	5895 19'4 ¹ / ₈ "	2321 7'7 ³ / ₈ "	2392 7'10 ¹ / ₈ "	2340 7'8 ¹ / ₈ "	2292 7'6 ¹ / ₄ "	30 480 67 200	2 490 5 490	27 990 61 710	33 1167

HLCU 255 500 – 256 999	1)
HLXU 250 000 – 250 599	
HLXU 250 600 – 251 749	1) 2) 3)

Remarks:

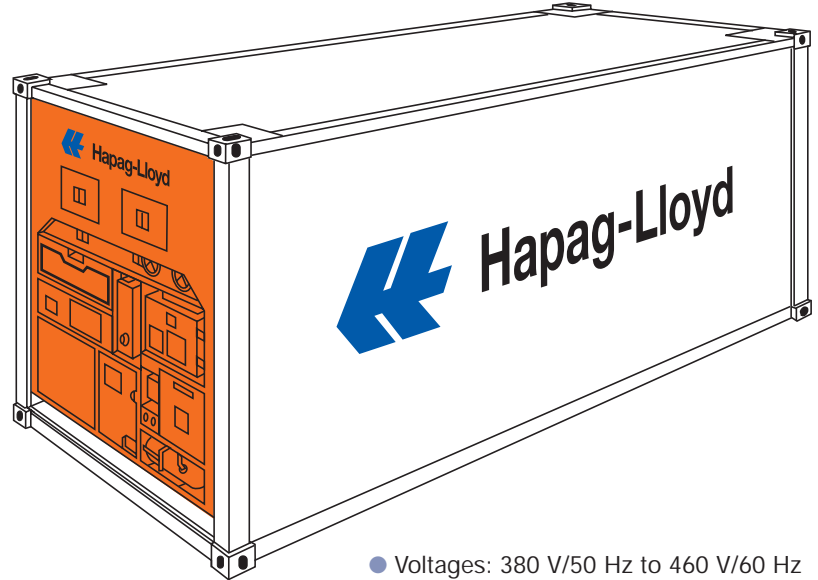
- 1) 10 lashing rings on each top longitudinal rail; particularly suitable for the transport of hanging garments racks.
- 2) Provided with extra lashing rings/bars for the transport of liner bags in the corner posts adjacent to the corner castings.
- 3) ISO size type code: 22 V0



Refrigerated Container (Temperature Controlled Container)

20'

ISO Size Type Code: 22 R1
(22 R9)



- Especially for cargo which needs constant temperatures above or below freezing point.
- State of the art insulation factors.
- Container available for set points as low as -27° C.
- De-humidification option available.
- Cold treatment available (ASDA).
- 20' Boxes with up to 29.9 qm capacity.
- Controlled fresh-air supply with up to 280 qm/h.
- ATO-DLO certification for flowerbulk.
- Integrated datalogger storing temperatures and events hourly.
- Low power consumption.
- Only use of environmental friendly refrigerants.

- Dedicated equipment for chemical/ non-foodstuff cargoes.
- Other series solely for foodstuff cargoes.
- Please note maximum stowage height in below table and as indicated by red line inside the container in order to ensure proper air circulation.

- Voltages: 380 V/50 Hz to 460 V/60 Hz (all refrigerated containers), **(exceptions footnote 1)**.
- Technical specification and illustration of electric plugs see page 44.
- Container are designed to maintain the cargoes temperature.
- The cargo should be precolded sufficiently.

Refrigerated Container

20'

Permitted temperature setting:
+ 25 °C to – 35 °C
(+ 77 °F to –31 °F)

The set temperatures can be kept
as long as the difference between
the ambient temperature
and the cargo temperature

does not exceed the following
limits:
For heating 42 °C (76 °F)
For cooling 65 °C (117 °F)

Construction	Inside Dimensions				Door Opening		Weights			Capacity m ³ cu.ft
	Length	Width	Height	Max.stow. Height	Width	Height	Max. Gross kg lbs	Tare kg lbs	Max. Payload kg lbs	
	mm ft	mm ft	mm ft	mm ft	mm ft	mm ft	kg lbs	kg lbs	kg lbs	

Hapag-Lloyd Serial Number	Foot- note
---------------------------------	---------------

8'6" high

Steelframe, Sandwich walls	5479 17'11 ⁵ / ₈ "	2286 7'6"	2257 7'4 ⁷ / ₈ "	2157 7'7 ¹ / ₈ "	2286 7'6"	2220 7'3 ³ / ₈ "	30 480 67 200	3 160 6 970	27 320 60 230	28,3 1000
	5459 17'10 ⁷ / ₈ "	2295 7'6 ³ / ₈ "	2268 7'5 ¹ / ₄ "	2168 7'1 ³ / ₈ "	2291 7'6 ¹ / ₈ "	2259 7'4 ⁷ / ₈ "	30 480 67 200	3 050 6 720	27 430 60 480	28,4 1003
	5448 17'10 ¹ / ₂ "	2290 7'6 ¹ / ₈ "	2264 7'5 ¹ / ₈ "	2164 7'1 ¹ / ₈ "	2286 7'6"	2260 7'5"	30 480 67 200	3 060 6 750	27 420 60 450	28,3 1000
	5534 18'1 ⁷ / ₈ "	2316 7'7 ¹ / ₈ "	2331 7'7 ³ / ₄ "	2231 7'3 ³ / ₄ "	2316 7'7 ¹ / ₈ "	2290 7'6 ¹ / ₈ "	30 480 67 200	3 030 6 680	27 450 60 520	29,9 1056
	5529 18'1 ⁵ / ₈ "	2316 7'7 ¹ / ₈ "	2331 7'7 ³ / ₄ "	2290 7'6 ¹ / ₈ "	2316 7'7 ¹ / ₈ "	2290 7'6 ¹ / ₈ "	30 480 67 200	2 960 6 530	27 520 60 670	29,9 1052
	5535 18'1 ⁷ / ₈ "	2284 7'5 ⁷ / ₈ "	2270 7'5 ³ / ₈ "	2224 7'3 ¹ / ₂ "	2290 7'6 ¹ / ₈ "	2264 7'5 ¹ / ₈ "	30 480 67 200	2 900 6 490	27 580 60 710	28,7 1014

HLCU 270 521 – 271 070	1)
HLCU 170 000 – 170 149	1) 5)
HLCU 271 071 – 271 220	2)
HLCU 271 221 – 271 470	2)
HLXU 270 000 – 270 499	2) 3)
HLXU 270 500 – 270 699	2) 3) 4)
HLXU 370 000 – 370 449	2) 3) 4)
HLXU 370 450 – 370 849	2) 3)

Remarks:

- 1) Can also be used with voltage 200 V / 50 Hz to 220 V / 60 Hz.
- 2) Suitable for clip-on generators.
- 3) Prepared for being equipped with additional cargo temperature sensors (USDA).
- 4) De-humidification option installed.
- 5) **Not to be used for foodstuffs. ISO size type code: 22 R9**

Refrigerated Container

20'

Permitted temperature setting:
+ 25 °C to - 35 °C
(+ 77 °F to -31 °F)

The set temperatures can be kept
as long as the difference between
the ambient temperature
and the cargo temperature

does not exceed the following
limits:
For heating 42 °C (76 °F)
For cooling 65 °C (117 °F)

Construction	Inside Dimensions				Door Opening		Weights			Capacity m ³ cu.ft	Hapag-Lloyd Serial Number	Foot- note	
	Length mm ft	Width mm ft	Height mm ft	Max.stow. Height mm ft	Width mm ft	Height mm ft	Max. Gross kg lbs	Tare kg lbs	Max. Payload kg lbs				
8'6" high													
Steelframe, Sandwich walls	5452 17'10 ⁵ / ₈ "	2293 7'6 ¹ / ₄ "	2252 7'4 ⁵ / ₈ "	2242 7'4 ¹ / ₄ "	2290 7'6 ¹ / ₈ "	2265 7'5 ¹ / ₈ "	30 480 67 200	2 960 6 530	27 520 60 670	28,2 996	HLXU 370 850 - 371 049	2) 3) 4)	
	5450 17'10 ⁷ / ₈ "	2284 7'6 ³ / ₈ "	2267 7'5 ¹ / ₄ "	2168 7'1 ³ / ₈ "	2291 7'6 ¹ / ₈ "	2259 7'4 ⁷ / ₈ "	30 480 67 200	2 885 6 360	27 595 60 840	28,2 997	HLXU 371 050 - 371 249	2) 3) 4)	
	5446 17'10 ³ / ₈ "	2293 7'4 ³ / ₄ "	2255 7'5 ¹ / ₈ "	2245 7'4 ³ / ₈ "	2290 7'6 ¹ / ₈ "	2265 7'5 ¹ / ₈ "	30 480 67 200	2 920 6 440	27 560 60 760	28,2 996	HLXU 371 250 - 371 449	2) 3) 4)	

Remarks:

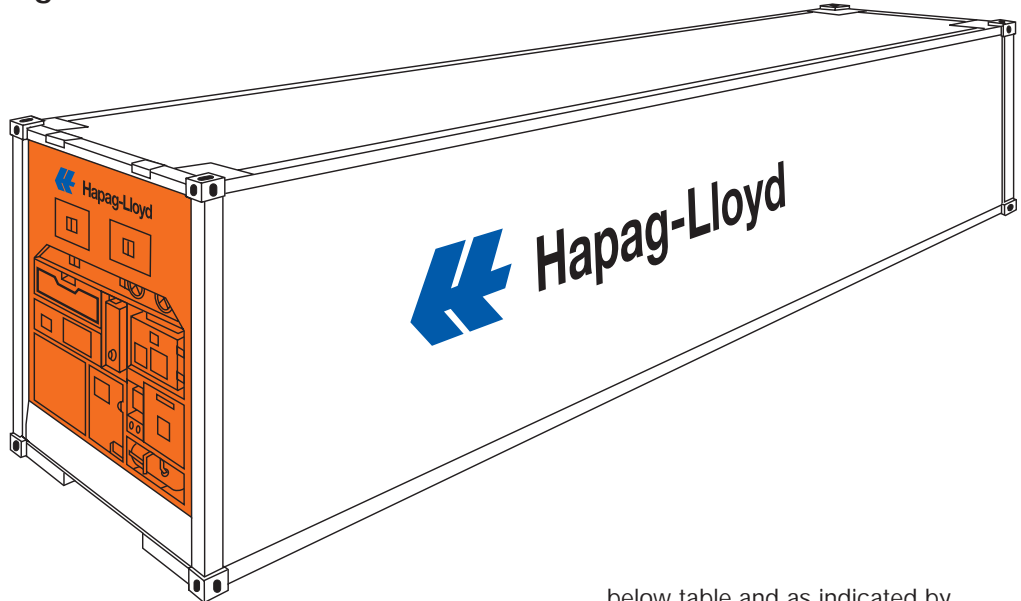
- 2) Suitable for clip-on generators.
- 3) Prepared for being equipped with additional cargo temperature sensors (USDA).
- 4) De-humidification option installed.
- 5) **Not to be used for foodstuffs. ISO size type code: 22 R9**

Refrigerated Container (Temperature Controlled Container)

40'

ISO Size Type Code: 45 R1 High Cube
42 R9

- State of the art insulation factors.
- Container available for set points as low as -27° C.
- De-humidification option available.
- Cold treatment available (ASDA).
- Controlled fresh-air supply with up to 280 qm/h.
- ATO-DLO certification for flowerbulk.
- Integrated datalogger storing temperatures and events hourly.
- Low power consumption.
- Only use of environmental friendly refrigerants.
- Dedicated equipment for chemical/ non-foodstuff cargoes.
- Other series solely for foodstuff cargoes.
- Container are designed to maintain the cargoes temperature.



- The cargo should be precolded sufficiently.
- Especially for cargo which needs constant temperatures above or below freezing point.
- Suitable for Clip-on generator.
- Please note maximum stowage height in

below table and as indicated by red line inside the container in order to ensure proper air circulation.

- Voltages 380 V/50 Hz to 460 V/60 Hz (all refrigerated containers).
- Technical specification and illustration of electric plugs see page 44.



High Cube Refrigerated Container / 8'6" high Non Foodstuff

40'

Permitted temperature setting:
+ 25 °C to - 25 °C
(+ 77 °F to - 13 °F)

The set temperatures can be kept as long
as the difference between the ambient
temperature and the cargo temperature

does not exceed the following limits:
For heating 42 °C (76 °F)
For cooling 65 °C (117 °F)

Construction	Inside Dimensions				Door Opening		Weights			Capacity m ³ cu.ft	Hapag-Lloyd Serial Number	Foot- note
	Length	Width	Height	Max. stow. Height	Width	Height	Max. Gross	Tare	Max. Payload			
	mm ft	mm ft	mm ft	mm ft	mm ft	mm ft	kg lbs	kg lbs	kg lbs			
8'6" high non foodstuff												
Steelframe, Sandwich walls	11 563 37'11 ¹ / ₄ "	2294 7'6 ¹ / ₄ "	2261 7'5"	2161 7'1"	2288 7'6"	2188 7'2 ¹ / ₈ "	34 000 74 960	4 600 10 140	29 400 64 820	60,0 2120	HLXU 770 000 - 770 149	
9'6" high												
Steelframe, Sandwich walls	11643 38'2"	2288 7'6 ¹ / ₈ "	2498 8'2 ³ / ₈ "	2378 7'9 ⁵ / ₈ "	2288 7'6 ¹ / ₈ "	2517 8'3 ¹ / ₈ "	30 480 67 200	4 180 9 220	26 300 57 980	66,5 2348	HLCU 475 000 - 475 299	1)
	11575 37'11 ⁵ / ₈ "	2294 7'6 ¹ / ₄ "	2560 8'4 ³ / ₄ "	2440 8'	2286 7'6"	2570 8'5 ¹ / ₈ "	32 500 71 650	4 300 9 480	28 200 62 170	68,0 2400	HLCU 476 000 - 476 499 HLCU 477 200 - 477 499	2)
	11568 37'11 ³ / ₈ "	2290 7'6 ¹ / ₈ "	2509 8'2 ³ / ₄ "	2389 7'10"	2290 7'6 ¹ / ₈ "	2473 8'1 ³ / ₈ "	32 480 71 600	4 240 9 350	28 240 62 250	66,4 2345	HLCU 477 000 - 477 199	
	11580 37'11 ⁷ / ₈ "	2288 7'6 ¹ / ₈ "	2498 8'2 ³ / ₈ "	2378 7'9 ⁵ / ₈ "	2288 7'6 ¹ / ₈ "	2517 8'3 ¹ / ₈ "	30 480 67 200	4 180 9 220	26 300 57 980	66,2 2370	HLCU 477 500 - 477 999 HLCU 478 700 - 478 799	
	11580 37'11 ⁷ / ₈ "	2290 7'6 ¹ / ₈ "	2513 8'3"	2393 7'10 ¹ / ₄ "	2290 7'6 ¹ / ₈ "	2522 8'3 ¹ / ₄ "	30 480 67 200	4 180 9 220	26 300 57 980	67,0 2370	HLCU 478 000 - 478 399	
	11580 37'11 ⁷ / ₈ "	2286 7'6"	2528 8'3 ¹ / ₂ "	2408 7'10 ³ / ₄ "	2286 7'6"	2545 8'4 ¹ / ₈ "	30 480 67 200	4 000 8 820	26 480 58 380	67,0 2366	HLCU 478 400 - 478 599	
	11580 37'11 ⁷ / ₈ "	2286 7'6"	2515 8'3"	2395 7'10 ¹ / ₄ "	2286 7'6"	2535 8'3 ³ / ₄ "	30 480 67 200	4 150 9 150	26 330 58 050	67,0 2366	HLCU 478 600 - 478 699	

Remarks:

1) Can also be used with voltage 200 V / 50 Hz to 220 V / 60 Hz.

2) Prepared for being equipped with additional cargo temperature sensors (USDA).



High Cube Refrigerated Container

40'

Permitted temperature setting:
+ 25 °C to – 25 °C
(+ 77 °F to – 13 °F)

The set temperatures can be kept
as long as the difference between
the ambient temperature
and the cargo temperature

does not exceed the following
limits:
For heating 42 °C (76 °F)
For cooling 65 °C (117 °F)

Construction	Inside Dimensions				Door Opening		Weights			Capacity m ³ cu.ft	Hapag-Lloyd Serial Number	Foot- note
	Length mm ft	Width mm ft	Height mm ft	Max.stow. height mm ft	Width mm ft	Height mm ft	Max. Gross kg lbs	Tare kg lbs	Max. Payload kg lbs			
9'6" high												
Steel frame, Sandwich walls	11578 37'11 ³ / ₄ "	2295 7'6 ³ / ₈ "	2550 8'4 ³ / ₈ "	2425 7'11 ¹ / ₂ "	2290 7'6 ¹ / ₈ "	2560 8'4 ³ / ₄ "	30 480 67 200	4 640 10 230	25 840 56 970	67,8 2394	HLXU 475 000 – 475 299 HLXU 476 000 – 476 649	1) 2) 2)
	11585 38'	2290 7'6 ¹ / ₈ "	2525 8'3 ³ / ₈ "	2405 7'10 ⁵ / ₈ "	2290 7'6 ¹ / ₈ "	2490 8'2"	34 000 74 950	4 190 9 240	29 810 65 710	67,0 2366	HLXU 475 300 – 475 749	1) 2)
	11577 37'11 ³ / ₄ "	2286 7'6"	2525 8'3 ³ / ₈ "	2400 7'10 ¹ / ₂ "	2286 7'6"	2490 8'2"	34 000 74 950	4 110 9 060	28 890 65 900	66,8 2366	HLXU 476 650 – 477 999	2)
	11577 37'11 ³ / ₄ "	2286 7'6"	2532 8'3 ⁵ / ₈ "	2407 7'10 ³ / ₄ "	2294 7'6 ¹ / ₄ "	2550 8'4 ³ / ₈ "	34 000 74 950	4 190 9 240	29 810 65 710	67,0 2366	HLXU 475 750 – 475 984 HLXU 478 000 – 478 599	1) 2) 1) 2)
	11583 38"	2286 7'6"	2532 8'3 ⁵ / ₈ "	2412 7'11"	2294 7'6 ¹ / ₄ "	2550 8'4 ³ / ₈ "	34 000 74 950	4 120 9 080	29 880 65 870	67,0 2366	HLXU 478 600 – 478 999	1) 2)
	11595 38'1 ¹ / ₂ "	2296 7'6 ³ / ₈ "	2542 8'4"	2402 7'10 ¹ / ₂ "	2294 7'6 ¹ / ₄ "	2550 8'4 ³ / ₈ "	34 000 74 950	4 190 9 230	29 810 65 720	67,7 2390	HLXU 670 000 – 670 399	2)
	11578 37'11 ³ / ₄ "	2280 7'5 ³ / ₄ "	2525 8'3 ³ / ₈ "	2400 7'10 ¹ / ₂ "	2276 7'5 ⁵ / ₈ "	2471 8'1'1 ¹ / ₄ "	34 000 74 960	4 150 9 150	29 850 65 811	66,8 2359	HLXU 670 400 – 672 899	2) 3)
	11578 37'11 ³ / ₄ "	2280 7'5 ³ / ₄ "	2525 8'3 ³ / ₈ "	2400 7'10 ¹ / ₂ "	2276 7'5 ⁵ / ₈ "	2471 8'1'1 ¹ / ₄ "	34 000 74 960	4 240 9 348	29 760 65 609	66,8 2359	HLXU 672 900 – 673 399	2) 3)

Remarks:

- 1) Can also be used with voltage 200 V / 50 Hz to 220 V / 60 Hz.
- 2) Prepared for being equipped with additional cargo temperature sensors (USDA).
- 3) De-humidification option installed.



High Cube Refrigerated Container

40'

Permitted temperature setting:
+ 25 °C to - 35 °C
(+ 77 °F to -31 °F)

The set temperatures can be kept
as long as the difference between
the ambient temperature
and the cargo temperature

does not exceed the following
limits:
For heating 42 °C (76 °F)
For cooling 65 °C (117 °F)

Construction	Inside Dimensions				Door Opening		Weights			Capacity m ³ cu.ft	Hapag-Lloyd Serial Number	Foot- note				
	Length	Width	Height	Max. stow height	Width	Height	Max. Gross	Tare	Max. Payload							
	mm ft	mm ft	mm ft	mm ft	mm ft	mm ft	kg lbs	kg lbs	kg lbs							
9'6" high																
Steel frame, Sandwich walls	11578	2280	2525	2425	2290	2530	34 000	4 200	29 800	66,8	HLXU 673 400 – 673 649	2) 3)				
	37'11 ³ / ₄ "	7'6 ³ / ₈ "	8'4 ³ / ₈ "	7'11 ¹ / ₂ "	7'6 ¹ / ₈ "	8'4 ³ / ₄ "	74 950	9 260	65 697	2359						
	11585	2290	2525	2405	2290	2490	34 000	4 190	29 810	67,0			HLXU 673 650 – 674 549	2) 3)		
	38'	7'6 ¹ / ₈ "	8'3 ³ / ₈ "	7'10 ⁵ / ₈ "	7'6 ¹ / ₈ "	8'2"	74 950	9 240	65 710	2366						
	11577	2286	2525	2400	2286	2490	34 000	4 110	28 890	66,8					HLXU 674 550 – 674 699	2) 3)
	37'11 ³ / ₄ "	7'6"	8'3 ³ / ₈ "	7'10 ¹ / ₂ "	7'6"	8'2"	74 950	9 060	65 900	2366						
	11577	2286	2532	2407	2294	2550	34 000	4 190	29 810	67,0						
37'11 ³ / ₄ "	7'6"	8'3 ⁵ / ₈ "	7'10 ³ / ₄ "	7'6 ¹ / ₄ "	8'4 ³ / ₈ "	74 950	9 240	65 710	2366							
11583	2286	2532	2412	2294	2550	34 000	4 120	29 880	67,0	HLXU 675 200 – 676 099	2) 3)					
38"	7'6"	8'3 ⁵ / ₈ "	7'11"	7'6 ¹ / ₄ "	8'4 ³ / ₈ "	74 950	9 080	65 870	2366							
11578	2280	2525	2425	2290	2550	34 000	4 300	29 700	66,7			HLXU 676 100 – 676 599	2) 3)			
38'1 ¹ / ₂ "	7'6 ³ / ₈ "	8'4"	7'10 ¹ / ₂ "	7'6 ¹ / ₄ "	8'4 ³ / ₈ "	74 970	9 482	65 489	2356							

Remarks:

2) Prepared for being equipped with additional cargo temperature sensors (USDA).

3) De-humidification option installed.



Tank Container

20'

ISO Size Type Codes: 20 T5 = 8' high

22 T0 = 8'6" high (22 T5 / 22 T6)

- Hapag-Lloyd provides tank containers which are approved to the highest standards. Depending on the characteristics of the products to be carried the requirements vary. Hapag-Lloyd offer their services on operational, technical and regulatory questions.

- Separate tank fleets are available for:

FOODSTUFFS, e.g.:

- Alcohols
- Fruit juices
- Edible oils
- Food additives

CHEMICAL PRODUCTS, e.g.:

- Flammables
- Oxidising agents
- Toxic substances
- Corrosives

- Tanks must be filled to not less than 80 % of their capacity to avoid dangerous surge/swell during transport.

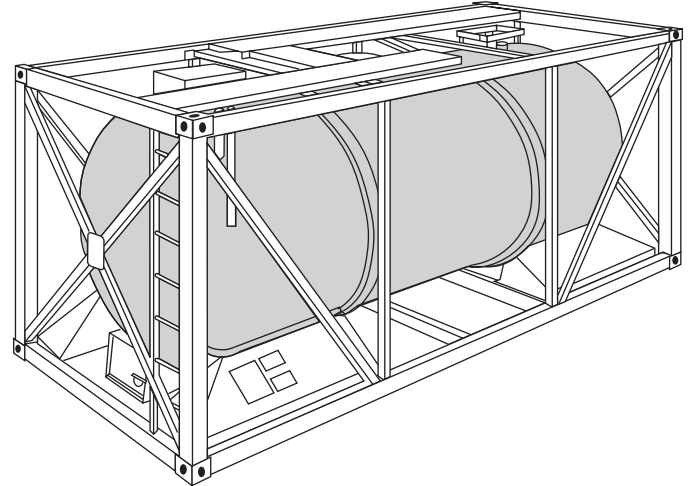
Tanks must not be filled to 100 % of their capacity. Sufficient ullage space shall be left – which must be determined depending on the thermal expansion of the product to be carried.

- Certain dangerous products must be carried in tanks having no openings below the surface level of the liquid. Such tanks must be discharged through a syphon pipe by either pressure or pumping.

- National road/rail weight limitations have to be maintained when arranging land transports.

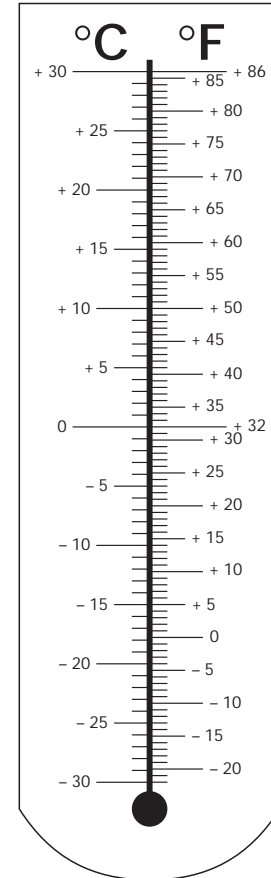
- For the cleaning of tanks and disposal of residues tariff rules apply. Tanks moving in a dedicated service are exempted from such rules until the dedication is terminated.

- **For more details please contact your nearest Hapag-Lloyd office or agent and let our experience work for you.**



Essential Conversion Factors

MULTIPLY NUMBER OF	BY	TO OBTAIN EQUIVALENT NUMBER OF
Inches/in/''	25.4	Millimetres/mm
Feet/ft/'	0.3048	Metres/m
Millimetres/mm	0.0394	Inches/in/''
Metres/m	3.281	Feet/ft/'
Sq. Metres/m	10.7639	Sq. Feet/ft
Sq. Feet/ft	0.0929	Sq. Metres/m
Cu. Feet/ft	0.0283	Cu. Metres/m
Cu. Metres/m	35.315	Cu. Feet/ft
Litres	0.0353	Cu. Feet/ft
Cu. Feet/ft	28.317	Litres
Litres	0.2642	U.S. Gallons
U.S. Gallons	3.785	Litres
Litres	0.22	U.K. Gallons
U.K. Gallons	4.5461	Litres
U.K. Gallons	1.2001	U.S. Gallons
U.S. Gallons	0.8327	U.K. Gallons
Kilograms/kg	2.2046	Pounds/lb
Pounds/lb	0.4536	Kilograms/kg
Long Tons (2240 lb)	1.01605	Tonnes (2204.62 lb)
Tonnes (1000 Kg)	0.9842	Long Tons (1016.05 Kg)
Bar	14.504	PSI
PSI	0.06895	Bar
Inches HG	0.4912	PSI
PSI	2.036	Inches HG
Kg/sq. cm	14.223	PSI
PSI	0.0703	Kg/sq. cm
Kg/sq. cm	0.9807	Bar
Bar	1.02	Kg/sq. cm
Kg/sq. cm	28.976	Inches HG
Inches HG	0.0345	Kg sq. cm
Degrees Fahrenheit	5/9, after subtracting 32	Degrees Celsius (Cetrigrade)
Degres Celsius (Centigrade)	9/5, and add 32	Degrees Fahrenheit



Container Size Type Codes according to ISO 6346

Hapag-Lloyd owned and longterm leased container types

Size (LxH)	Type	ISO Type Group	ISO Size Type	ISO Type Group di*	ISO Size Type di*
		1	2	1a	2a
20'x8'	General Purpose	20GP	20G0		
20'x8'6"	General Purpose	22GP	22G0		
		22GP	22G1		
20'x8'6"	General Purpose (Fantainer)	22VH	22V2		
		22VH	22V3 *		22V2
20'x8'6"	Ventilated	22VH	22V0		
20'x8'6"	Bulk	22BU	22B0		
20'x8'6"	Open Top	22UT	22U1		
20'x8'6"	Hardtop	22UP *	22U6*	22UT	22U1
20'x1'11/4"	Platform	29PL	29P0		
20'x8'	Flat (fixed ends)	20PF	21P1		
20'x8'6"	Flat (fixed ends)	22PF	22P1		
20'x8'6"	Flat (collapsible)	22PC	22P3		
20'x8'6"	Flat (coll., flush folding)	22PC	22P8 *		22P3
20'x8'6"	Refrigerated	22RT	22R1		
20'x8'6"	Refrigerated (no foodstuffs)	22RC *	22R9 *	22RT	22R1
20'x8'	Insulated	20HR	20H0		
20'x8'6"	Tank (non-dangerous liquids)	22TN	22T0		
40'x8'6"	General Purpose	42GP	42G0		
		42GP	42G1		
40'x9'6"	High Cube GP	45GP	45G0		
		45GP	45G1		
40'x8'6"	Open Top	42UT	42U1		
40'x8'6"	Hardtop	42UP *	42U6 *	42UT	42U1
40'x9'6"	High Cube Hardtop	45UP *	45U6 *	45UT	45U1
40'x2'	Platform	49PL	49P0		
40'x8'6"	Flat (fixed ends)	42PF	42P1		
40'x8'6"	Flat (collapsible)	42PC	42P3		
40'x8'6"	Flat (coll., flush folding)	42PC	42P8 *		42P3
40'x9'6"	Flat (collapsible)	45PC	45P3		
40'x9'6"	Flat (coll., flush folding)	45PC	45P8 *		45P3
40'x8'6"	Refrigerated	42RT	42R1		
40'x8'6"	Refrigerated (diesel genset)	42RS	42R3		
40'x8'6"	Refrigerated (no foodstuffs)	42RC *	42R9 *	42RS	42R3
40'x9'6"	Refrigerated	45RT	45R1		
40'x9'6"	Refrigerated (no foodstuffs)	45RC *	45R9 *	45RT	45R1
40'x8'6"	Insulated	42HR	42H0		

*) Some Types/Groups in columns "1" and "2" are marked as non-ISO.

** means ISO spares codes have been used.

If official ISO codes are required for data interchange (dl)

pls use entries in columns "1a" and "2a".



Issued 2004

Hapag-Lloyd Container Line · Container service · D-20079 Hamburg

Internet: www.hlcl.com



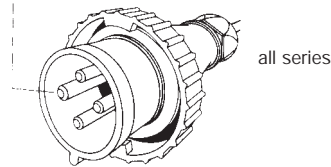
Electric Plugs on Refrigerated Containers

- Depending on power sources refrigerated containers are equipped with 1 or 2 plugs
380 V/50 Hz to 460 V/60 Hz (32 A).
200 V/50 Hz to 220 V/60 Hz (60 A).
- There are fixed cables with a length of 15 m (49 ft).
- Couplings for adapters are available.
- **Adapters are subject to corresponding safety regulations.**

380/460 V plugs:

- 4poles according to CEE.
- According to ISO 1496-2 annex M.
- **Earth contact in 3hr position according to socket.**

Earth Contact



200/220 V plugs:

- 4poles.
- According to ISO 1496-2 annex O.
- **Position of earth contact according to illustration.**

Earth Contact

